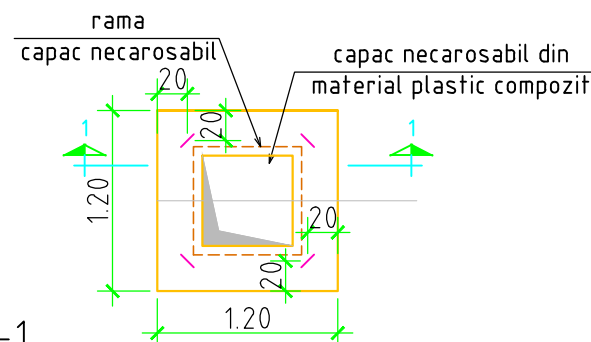
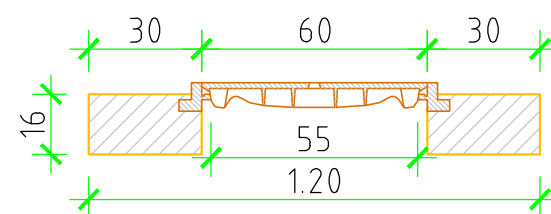


PLAN COFRAJ PLACA PREFABRICATA
NECAROSABILA
SCARA 1:50



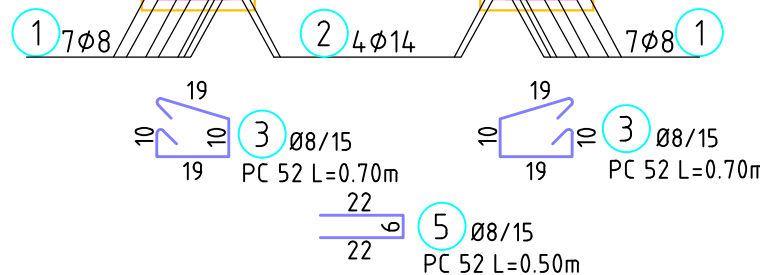
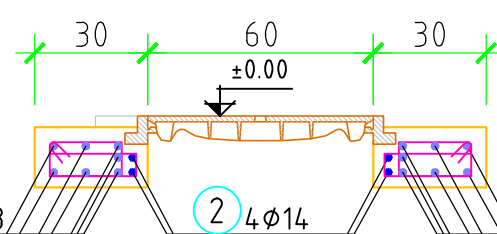
Sețiunea 1-1

SCARA 1:20



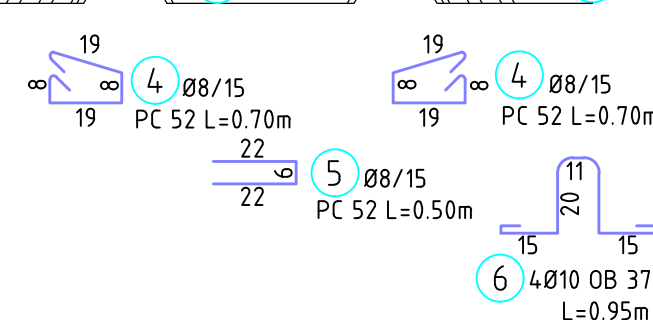
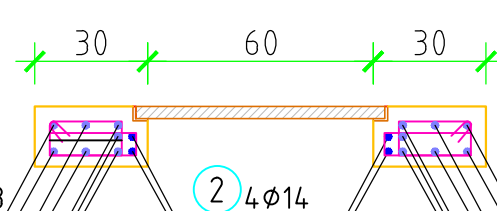
Sețiunea 2-2

SCARA 1:20



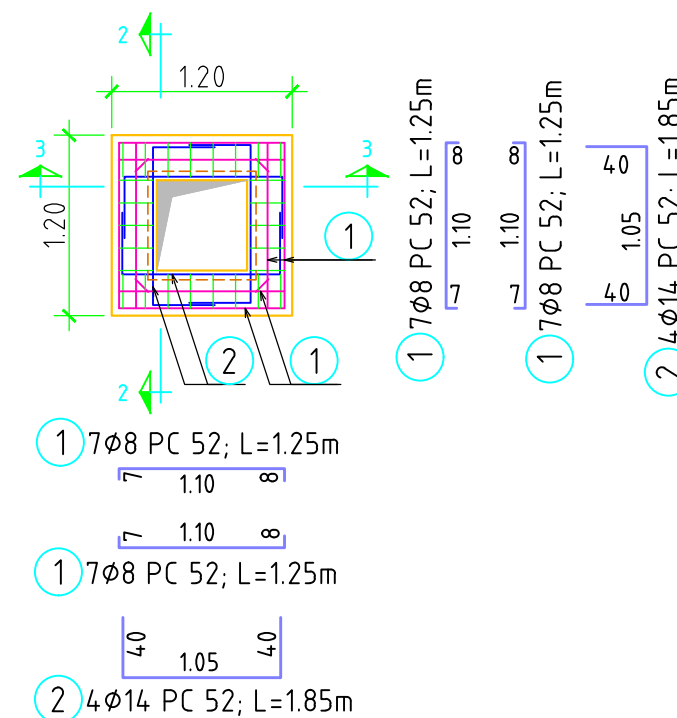
Sețiunea 3-3

SCARA 1:20



BETON ARMAT
OTEL BETON

ARMARE PLACA PREFABRICATA
NECAROSABILA
SCARA 1:50



Extras de armatura

Marca	ø	Buc	Lungime	OB 37			PC52		
				ø 10	ø 8	ø 14	ø 8	ø 14	ø 16
1	8	20	1,25				25,00		
2	14	8	1,85					14,80	
3	8	16	0,70				11,20		
4	8	10	0,70				7,00		
5	8	28	0,50				14,00		
6	10	4	0,95	3,80					
ml/ø				3,80	57,20	14,80			
kg/ml				0,617	0,395	1,208			
kg/ø				2,34	22,59	17,88			
TOTAL				kg/buc		2	40		

NOTA:

-Acoperirea nominala cu beton a armaturilor este:
placa exterior 30mm
interior 20mm

-Capacul va fi neocarosabil din material compozit clasa B 125
-Dimensiunile partiale ale armaturilor sunt date la interior.

C25/30, XF4, XD3, XC4, Cl0.2, Dmax 16, S3, P4, CEM II/A-S 32.5R
OB 37, PC 52

Rev	Nume	Ver	Aprb	Data	Descriere

Autoritatea contractanta: **S.C. AQUACARAS S.A. CARAS SEVERIN**



Adresa: P-la Republicii, nr. 7, Resita
Jud. Caras Severin
Tel.: +40 255 212 458
Fax.: +40 255 214 421
E-mail: office@aquacaras.ro

Proiectant: **Consortiu S.C Eptisa Romania S.R.L. si Eptisa Servicios de Ingenieria S.L.**
Sos. Dudești-Pantelimon nr. 42, RAMS center, et. 5, corp A, sector 3, București
Tel.: +40 21 301 14 70
Fax: +40 21 301 14 80
www.eptisa.com



Proiect: **MODERNIZAREA INFRASTRUCTURII DE APA SI APA UZATA IN JUDETUL CARAS SEVERIN - AGLOMERAREA RESITA**

Plansa: **Detaliu tip
Placa din b.a. prefabricata
pentru camine de bransament
De 25mm**

Desenat: Ing. B. Paraschiv Data: Aprilie 2013
Verificat: Ing. M. Serbanoiu Data: Aprilie 2013
Aprobat: Ing. D. Spiridon Data: Aprilie 2013

Plansa nr. **CS-RE-PT/DA-A-R-31** Revizia **0**